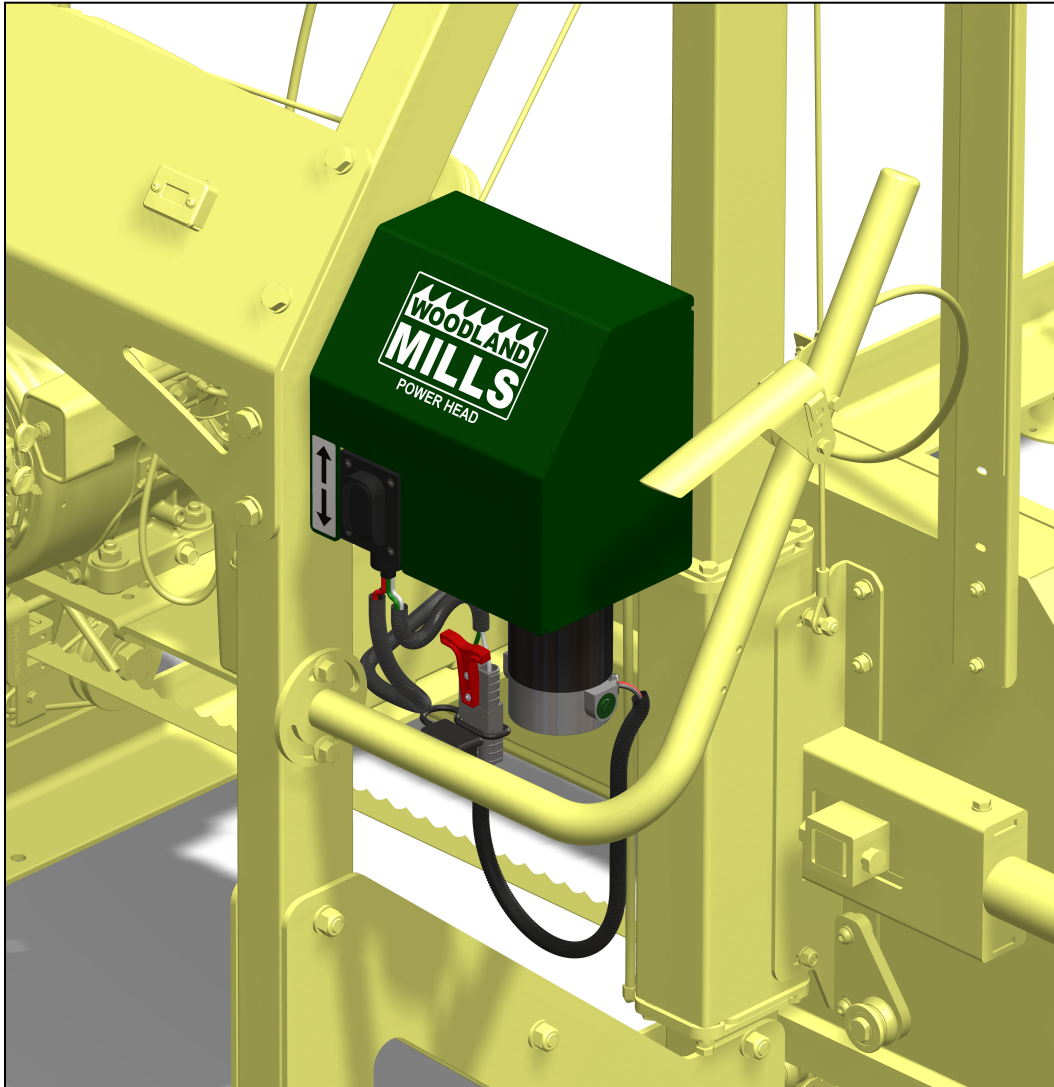


SAWMILL ACCESSORY

HM126, HM130, and
HM130MAX™ Sawmills



POWER HEAD KIT



DISCOVER THE WOODLAND™

HM130MAX™ is a trademark of Woodland Mills, Inc.

This page intentionally left blank.



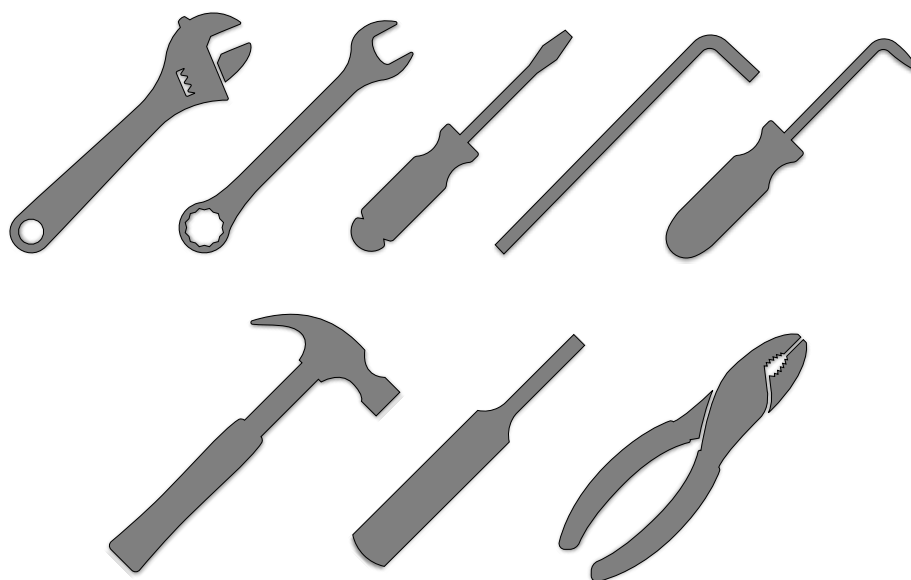
TABLE OF CONTENTS

TABLE OF CONTENTS	1
TOOLS REQUIRED	2
LOWER THE SAWHEAD	3
DISASSEMBLY	4
2020 AND NEWER HM126 AND HM130MAX SAWMILLS	4
2019 AND OLDER HM126 AND HM130 SAWMILLS	6
ASSEMBLY	8
1. POWER HEAD UNIT TO SAWMILL	8
2. ELECTRICAL CONNECTIONS	11
3. PUSH HANDLE	12
OPERATION	13
EXPLODED ASSEMBLY VIEWS	14
CHASSIS	14
MOTOR/REDUCER & COUPLER	15
MOUNTING	16
PARTS LIST	17
NOTES	18

TOOLS REQUIRED

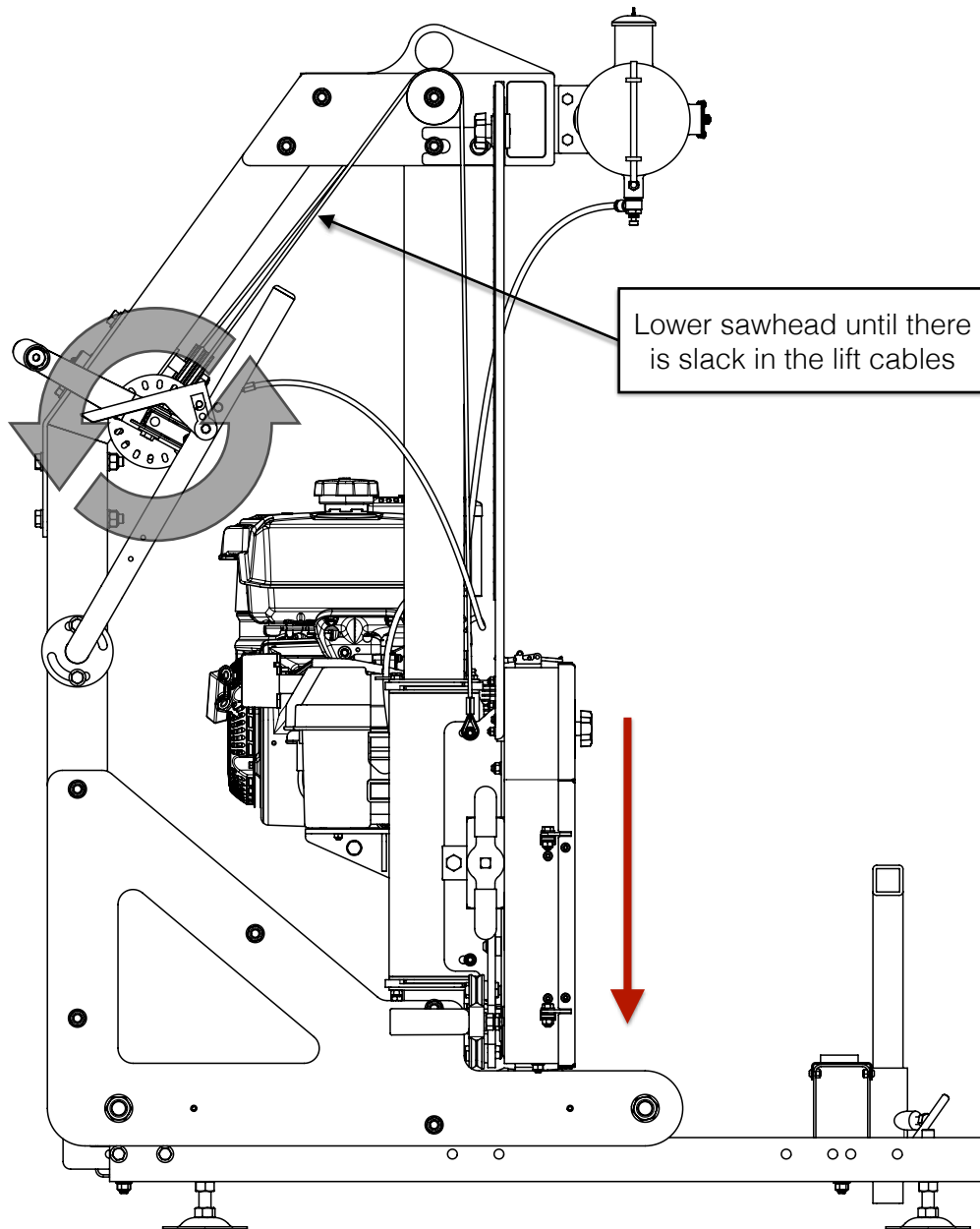
Collect the necessary tools prior to starting the assembly. Note that not all tools listed below are required to assemble the Power Head. Substitute tools as necessary based on availability.

Tool	Specification
Hex Key	6 mm
Wrench	17-18 mm
Adjustable Wrench	Variable
Screwdriver	Slotted and/or Phillips
Pliers	Slip-Joint or Needle Nose
Angled-Tip Pick or Awl	
Pin Punch	5 mm
Hammer	Standard



LOWER THE SAWHEAD

Before starting disassembly, lower the sawhead all the way to the bottom. Once the sawhead has reached its lowest point, continue turning the crank handle until there is some slack in the wire rope lift cables—but not so much slack that the cables come off the pulleys.

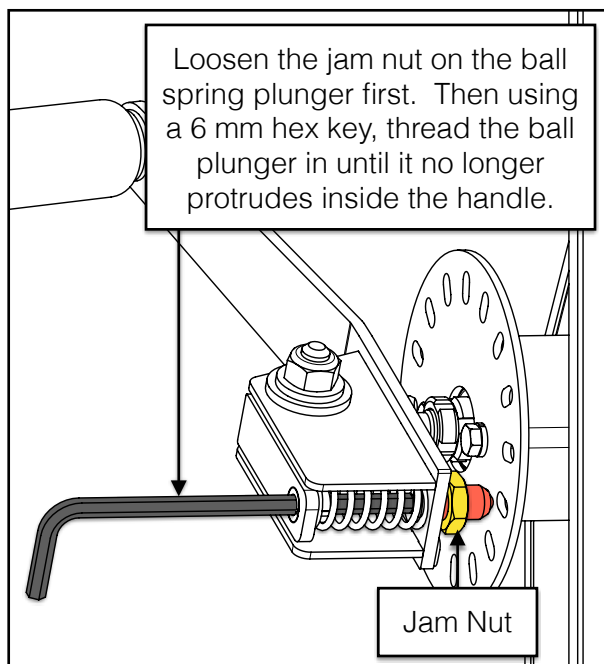


This takes the weight off the lift mechanism lead screw so it can be turned by hand in a later assembly step.

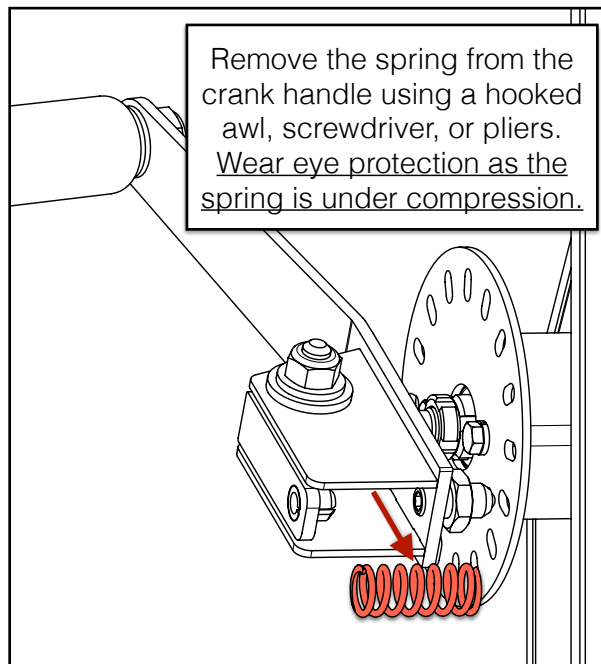
DISASSEMBLY

2020 AND NEWER HM126 AND HM130MAX SAWMILLS

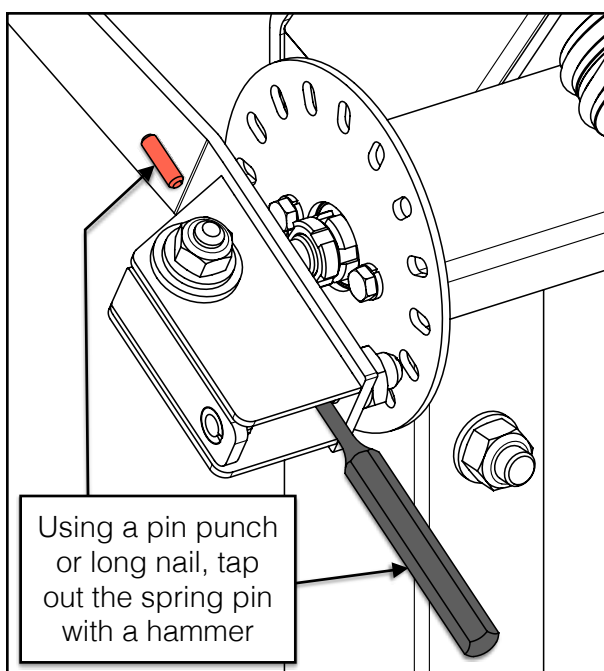
Remove the crank handle from *2020 and newer* HM126 and HM130MAX sawmills following the steps below.



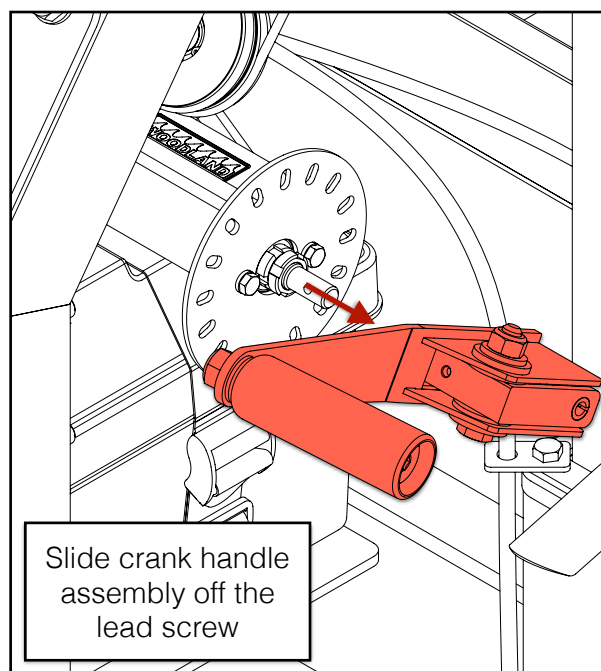
1. LOOSEN JAM NUT AND BALL PLUNGER



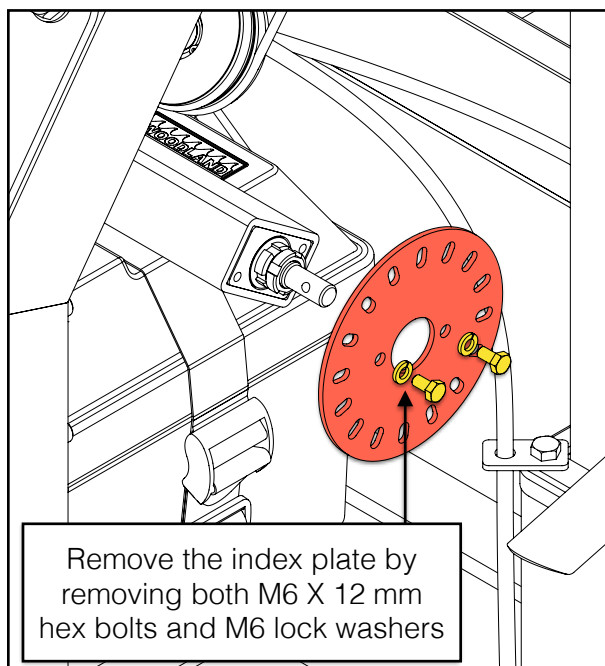
2. REMOVE COMPRESSION SPRING



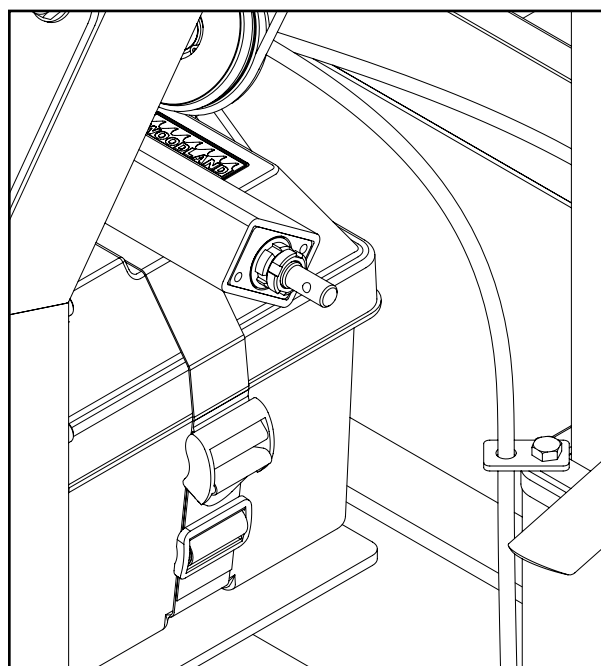
3. REMOVE SPRING PIN



4. REMOVE CRANK HANDLE ASSEMBLY



5. REMOVE INDEX PLATE

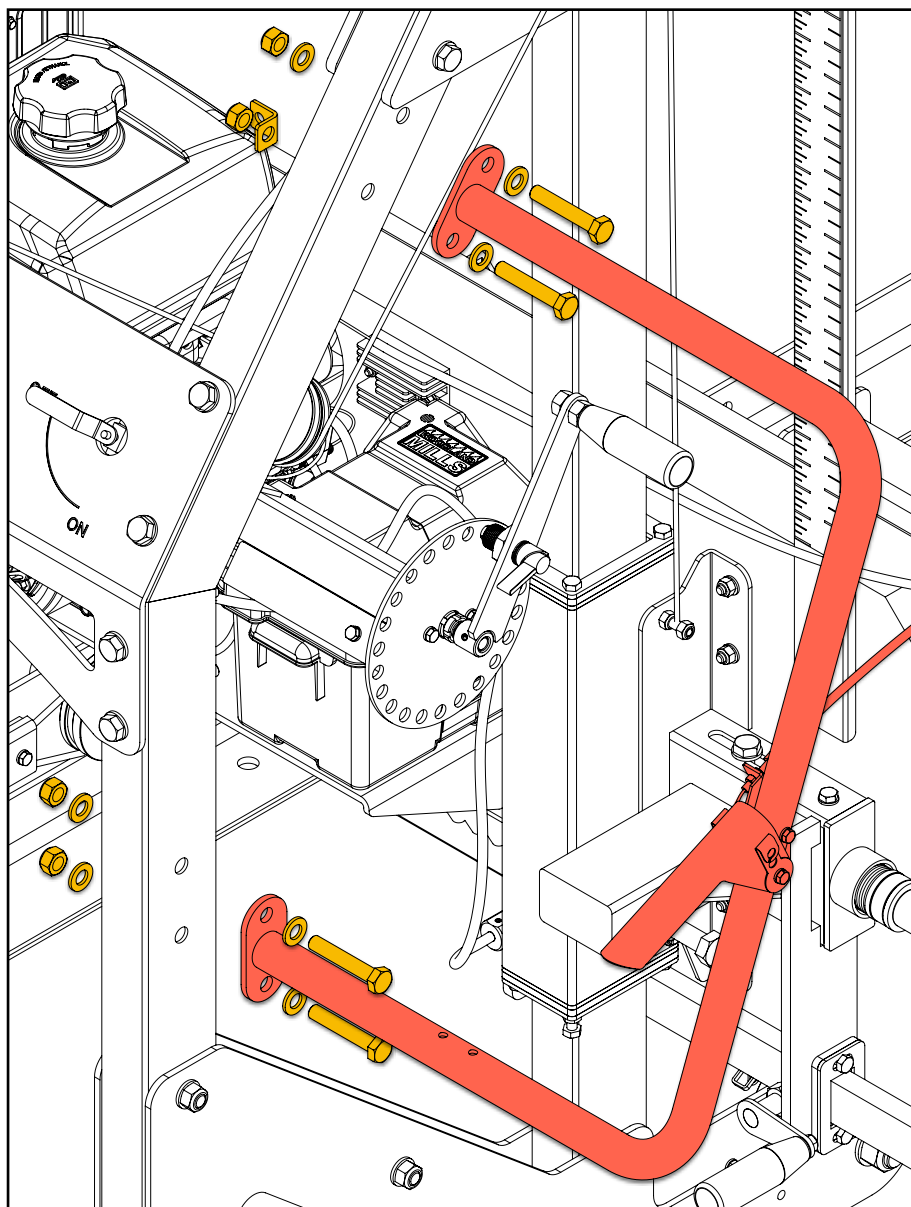


CRANK HANDLE REMOVAL COMPLETE

2019 AND OLDER HM126 AND HM130 SAWMILLS

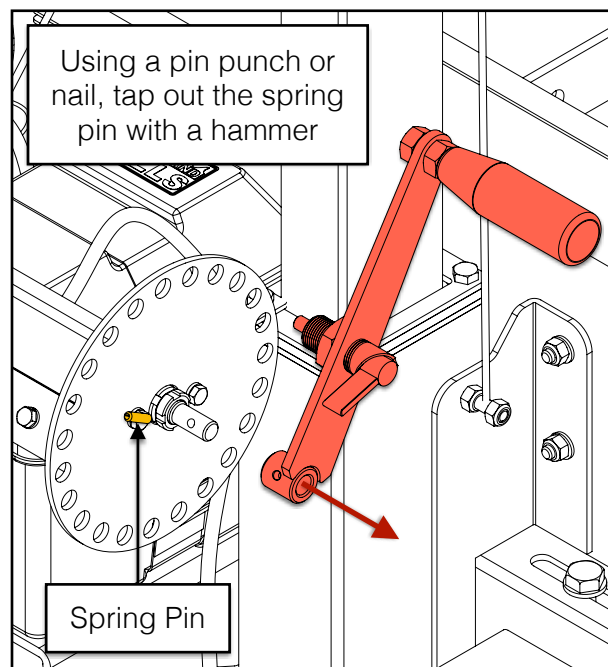
These steps only apply to 2019 and older HM126 & HM130 sawmills.

Remove the push handle and crank handle from *2019 and older* HM126 and HM130 sawmills by following the steps below. The final two steps where the lift mechanism cover is removed apply to the *HM130* sawmill only.

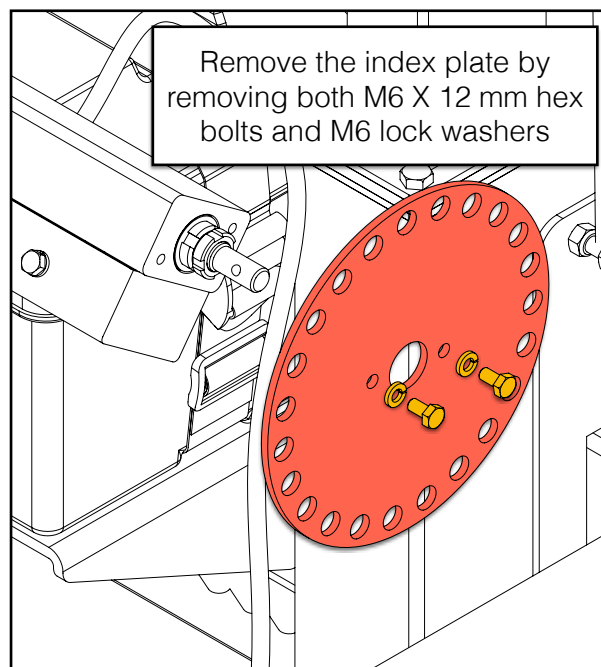


1. TEMPORARILY REMOVE THE PUSH HANDLE AND ATTACHED THROTTLE HANDLE.

Note: It is not necessary to disconnect the throttle cable from the engine. Simply set the push handle with attached throttle handle aside until the Power Head is installed.

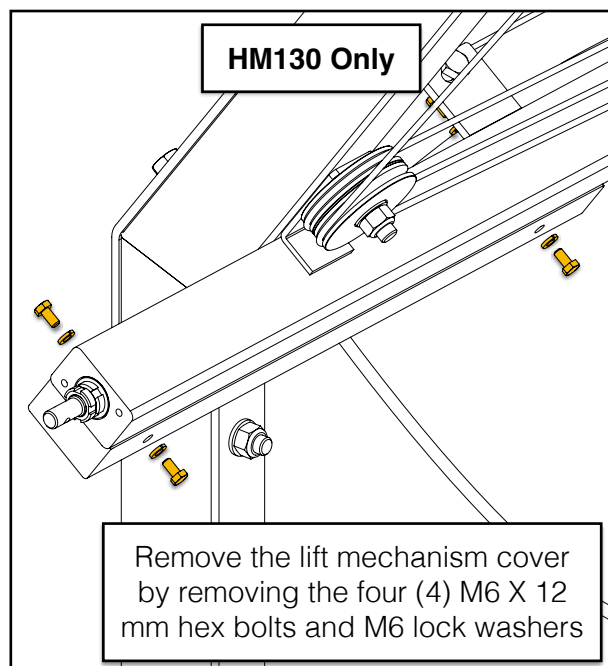


2. REMOVE SPRING PIN AND CRANK ARM

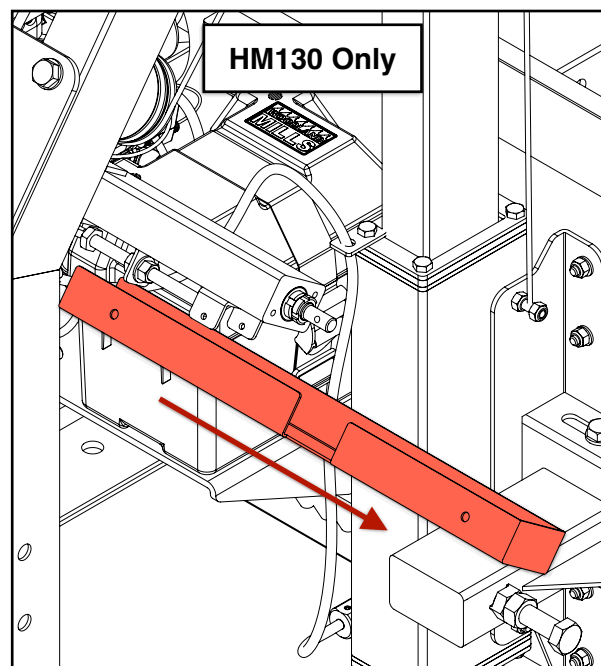


3. REMOVE INDEX PLATE

The final two steps only apply to HM130 sawmills.



**4. REMOVE BOLTS AND WASHERS FROM
LIFT MECHANISM COVER**

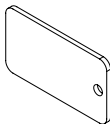
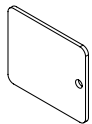
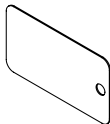
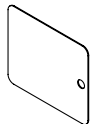
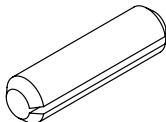


**5. SLIDE COVER OUT FROM LIFT
MECHANISM**

ASSEMBLY

1. POWER HEAD UNIT TO SAWMILL

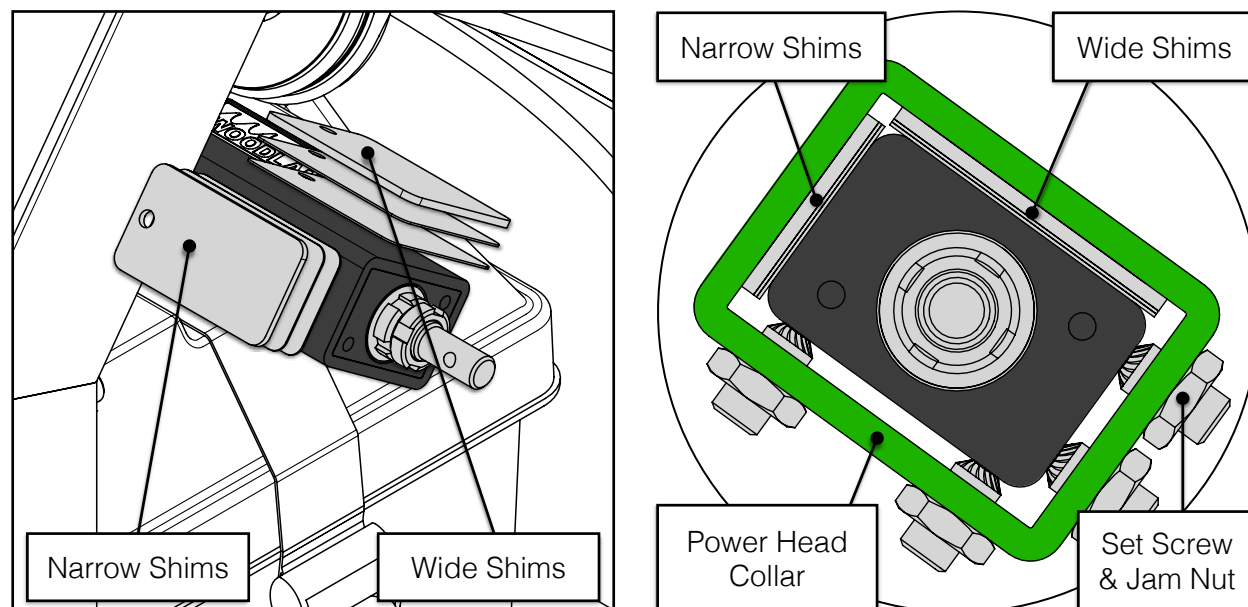
Assemble the power head unit to the sawmill's lift mechanism housing using the components listed below.

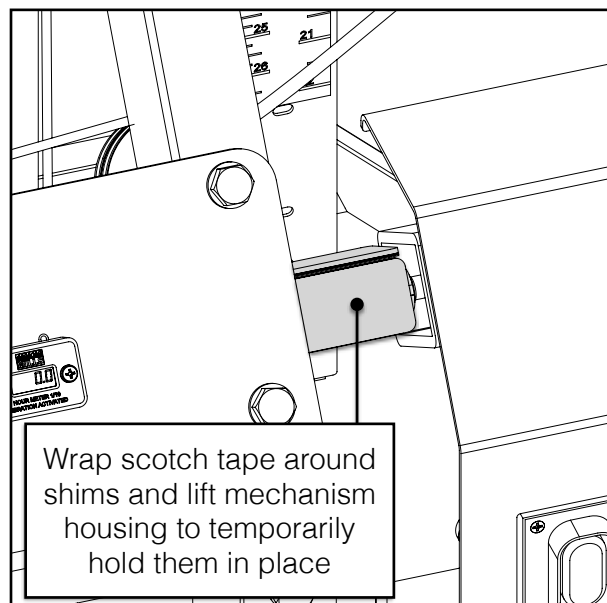
1x	Narrow Shim [2.66 mm Thk]		1x	Wide Shim [2.66 mm Thk]	
??	Narrow Shims [0.67 mm Thk] [0.97 mm Thk]		??	Wide Shims [0.67 mm Thk] [0.97 mm Thk]	
1x	Spring Pin				

****Note: the Power Head Kit includes an assortment of shims in three (3) thicknesses: 2.66, 0.97, and 0.67 mm. Use one (1) 2.66 mm shim per face and a combination of thinner shims to achieve better alignment with lift mechanism housing.****

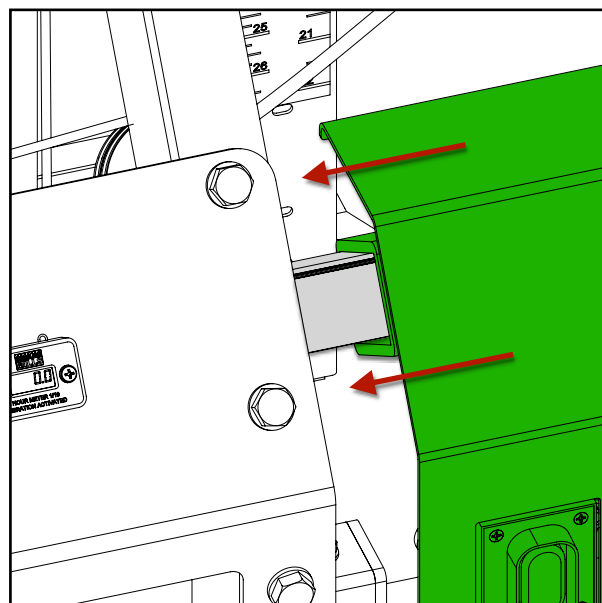
A combination of shim thicknesses—in conjunction with set screws—are used to align the hole in the power head flexible coupling hub with the lead screw shaft in the sawmill's lift mechanism.

The narrow shims help centre the power head across the narrow faces of the lift mechanism housing, likewise the wide shims centre it across the wide faces.

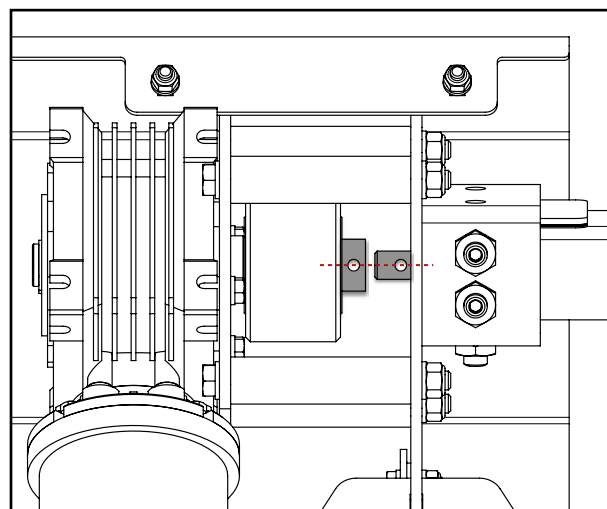




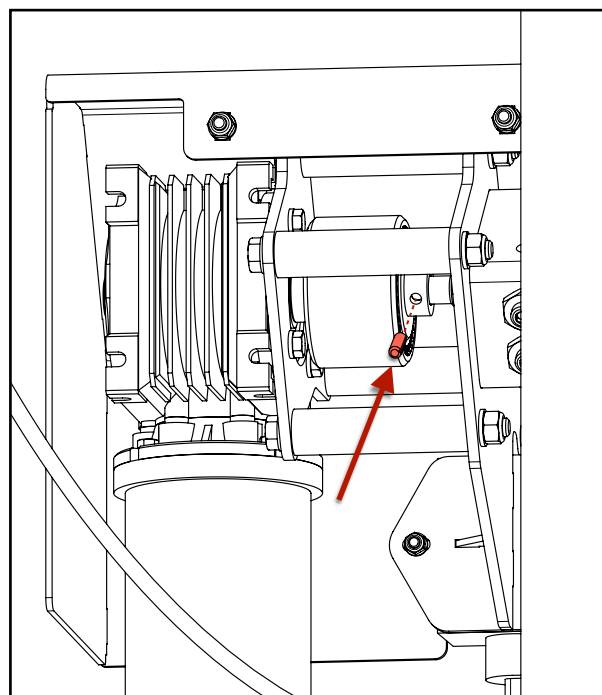
TEMPORARILY SECURE THE 2 SHIM STACKS AGAINST THE LIFT MECHANISM HOUSING SURFACES USING SCOTCH TAPE.



SLIDE THE POWER HEAD COLLAR PART WAY OVER THE SHIMS AND LIFT MECHANISM BUT DO NOT LET THE LEAD SCREW ENTER THE COUPLING HUB.

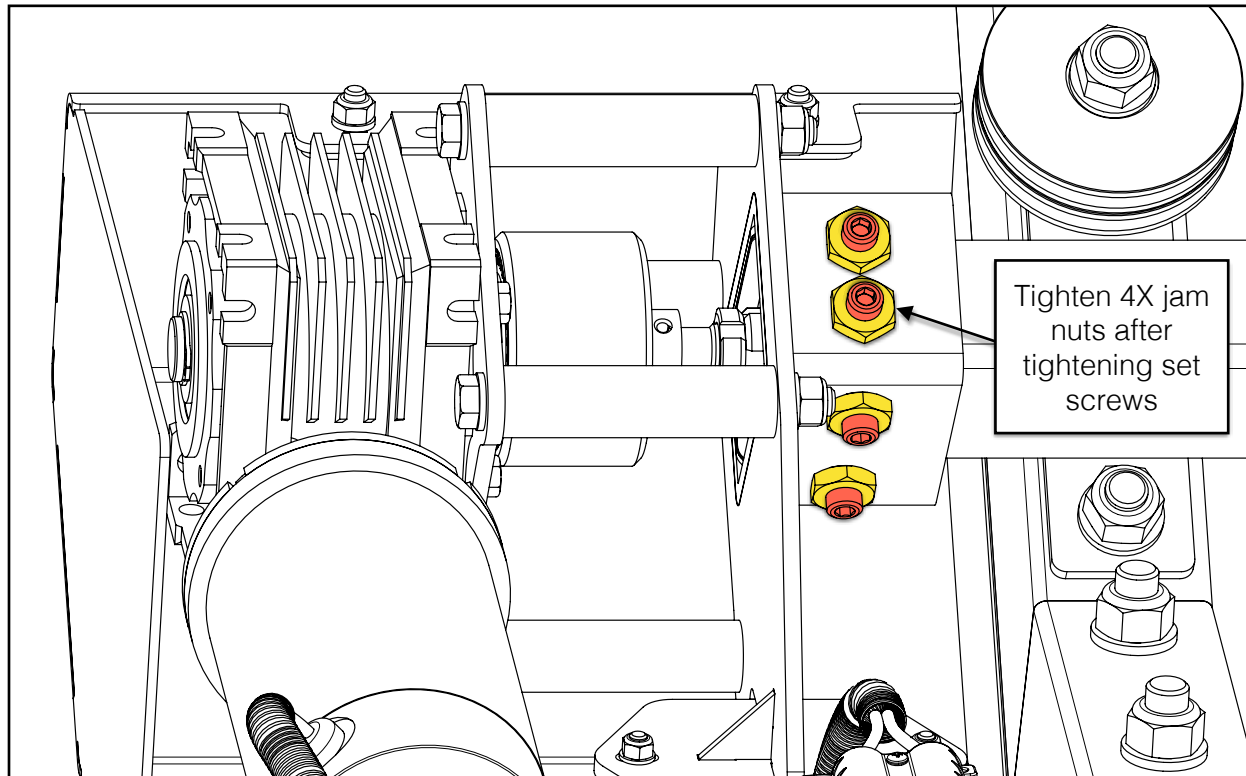


ORIENT THE HOLE IN THE LEAD SCREW WITH THE HOLE IN THE COUPLING HUB BY ROTATING THE LEAD SCREW. USE A SCREWDRIVER OR NAIL IF NECESSARY. THEN CONTINUE TO SLIDE THE POWER HEAD ONTO THE LIFT MECHANISM UNTIL BOTH HOLES ARE ALIGNED.



WITH THE HOLES ALIGNED, INSERT THE SPRING PIN UNTIL FULLY SECURED.

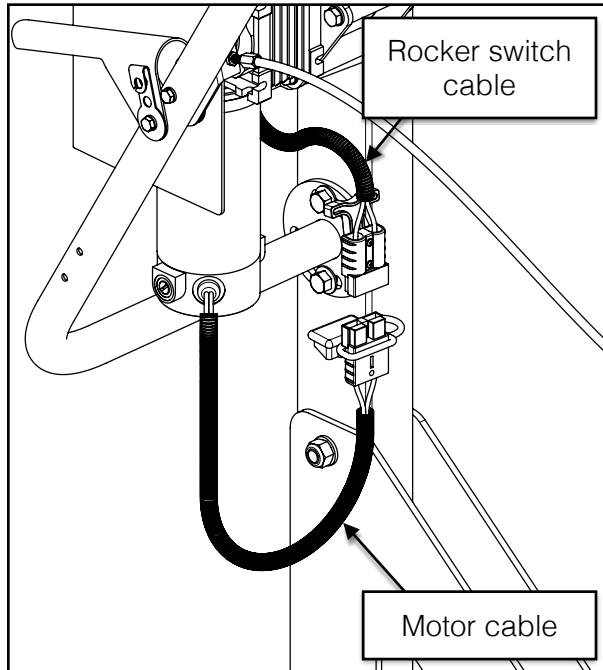
Power Head Kit
HM126, HM130, and HM130MAX™ Sawmills



TIGHTEN THE FOUR (4) SET SCREWS AROUND THE POWER HEAD COLLAR. THEN TIGHTEN THE FOUR (4) JAM NUTS AND THE POWER HEAD UNIT WILL BE FULLY SECURED TO THE SAWMILL

2. ELECTRICAL CONNECTIONS

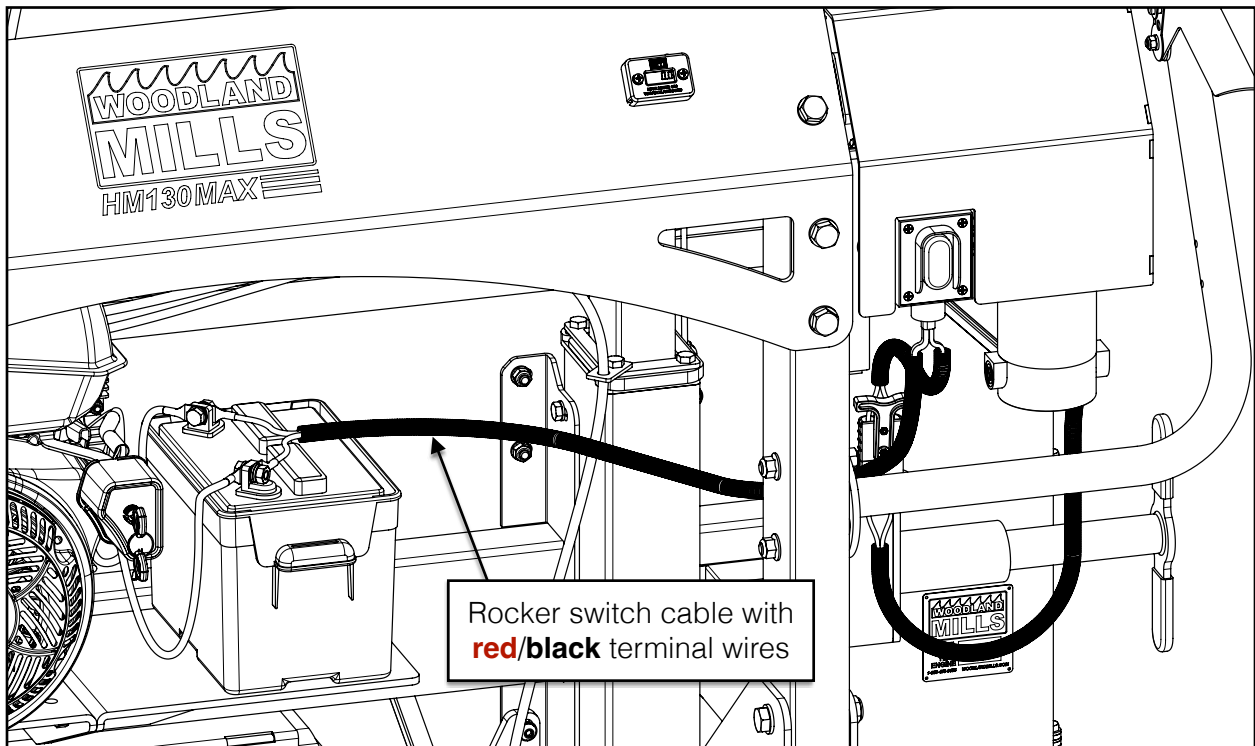
Make the electrical connections from the power head to the sawmill as outlined below.



1. CONNECT THE ROCKER SWITCH CABLE CONNECTOR TO THE MOTOR CABLE CONNECTOR.

2. CONNECT THE ROCKER SWITCH CABLE WITH THE RED & BLACK TERMINAL WIRES TO THE BATTERY.

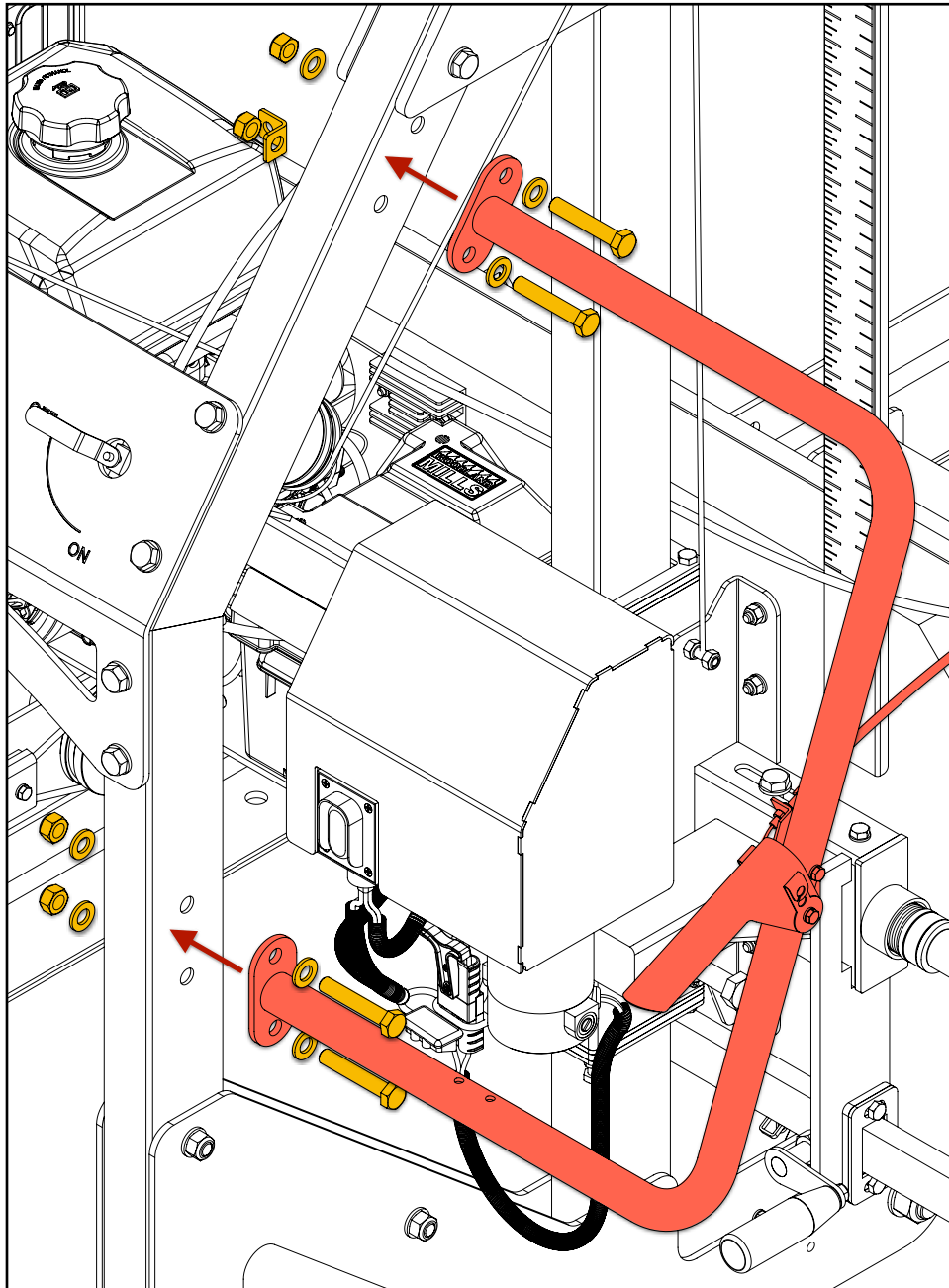
BLACK = NEGATIVE (-)
RED = POSITIVE (+)



3. PUSH HANDLE

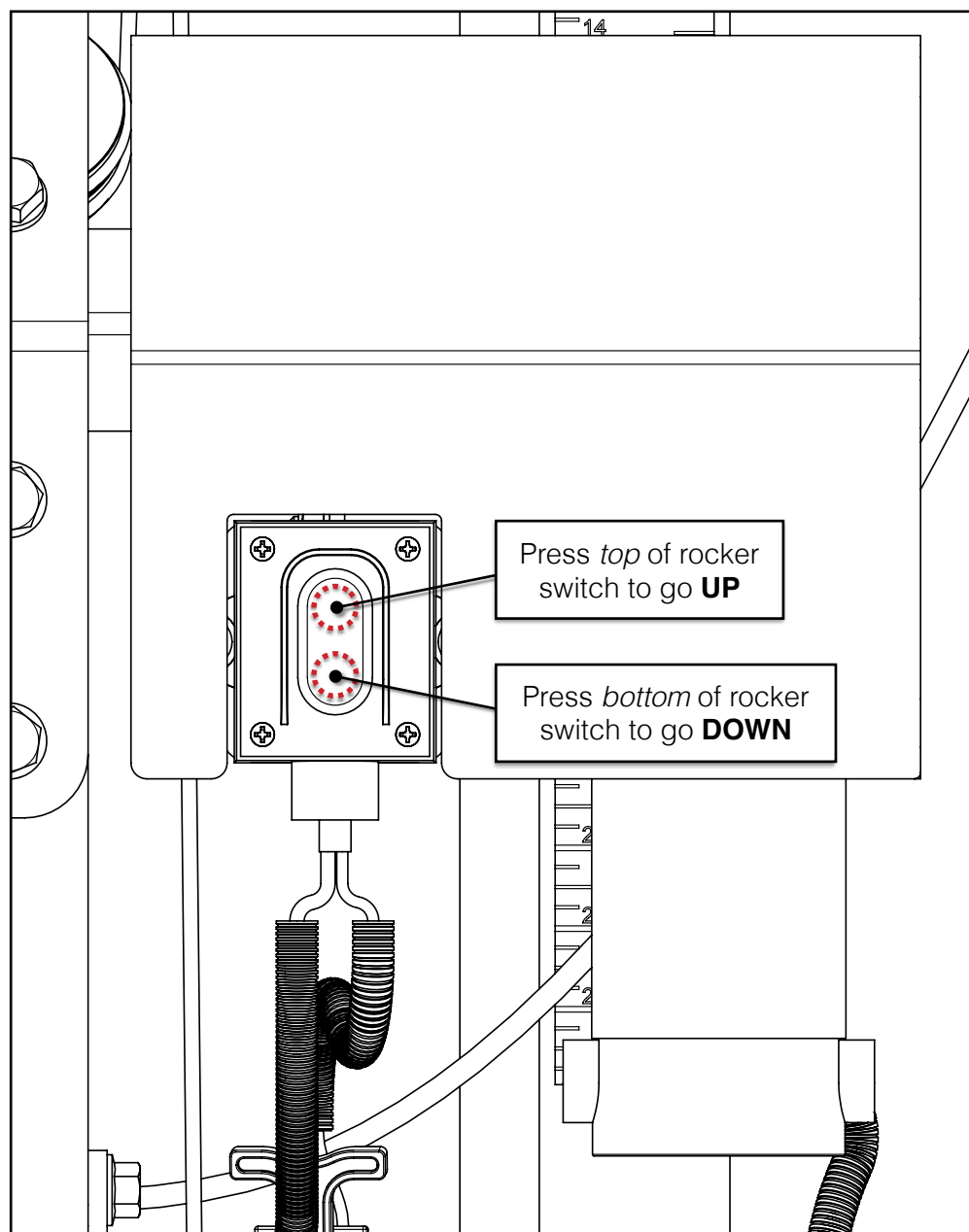
This step only applies to 2019 and older HM126 & HM130 sawmills.

With the Power Head unit fully assembled to the sawmill, re-install the push handle with the attached throttle handle to the carriage using the four (4) M12 X 70 mm hex bolts, M12 flat washers, and M12 lock nuts.



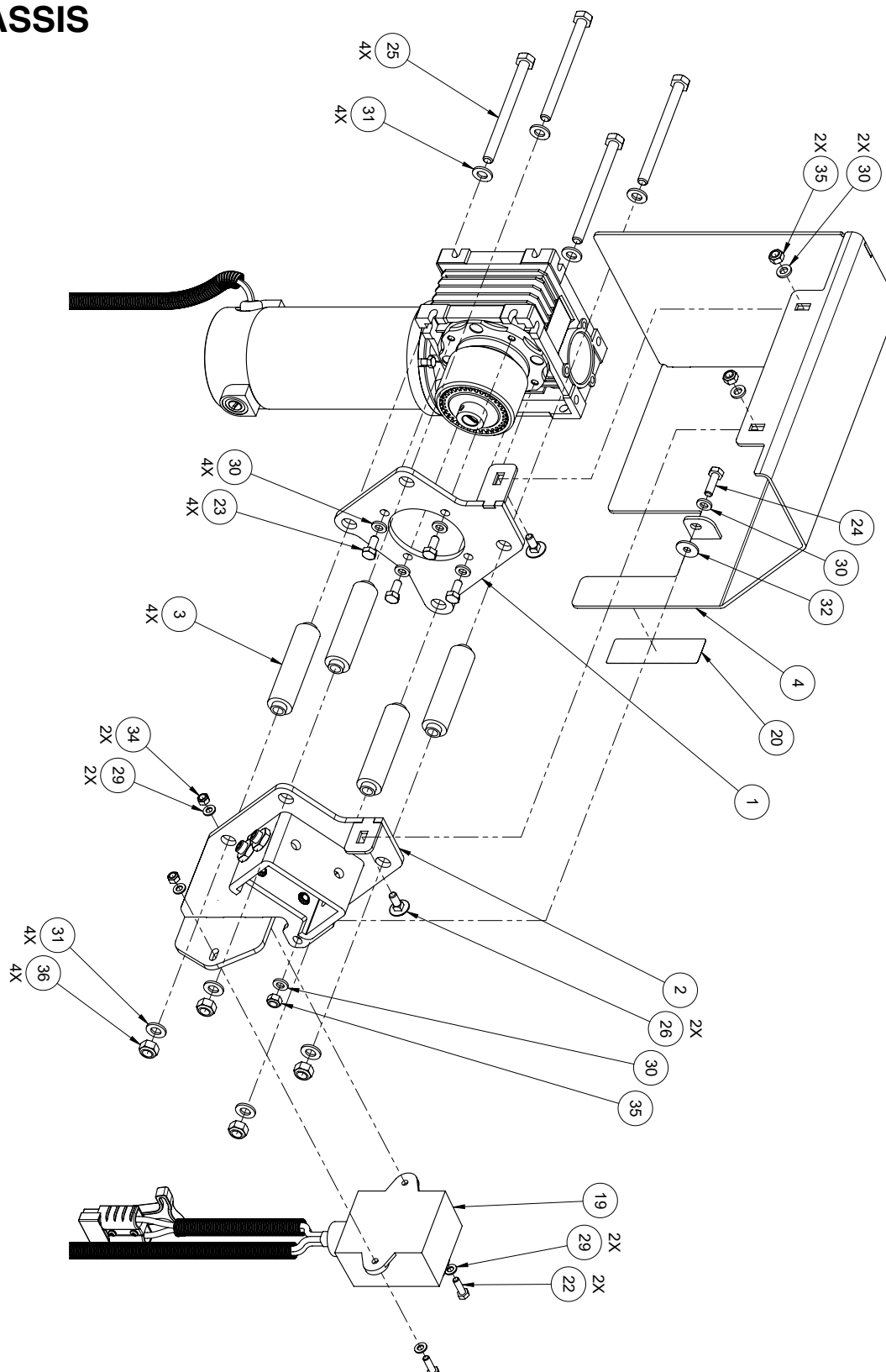
OPERATION

To move the sawhead up and down, simply press the *top* of the rocker switch to go **UP** or press the *bottom* of the rocker switch to go **DOWN**.

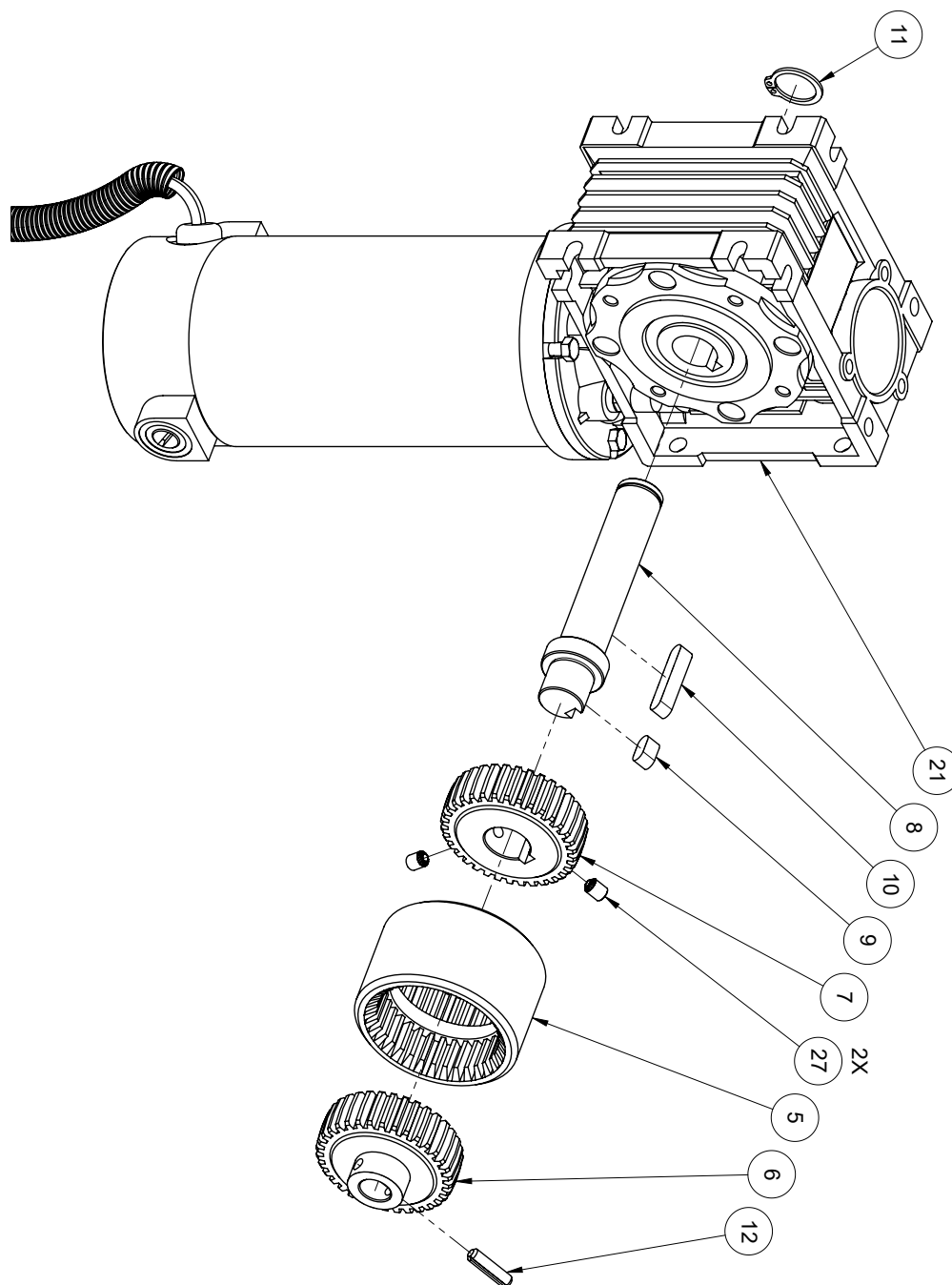


Sawmills without electric start

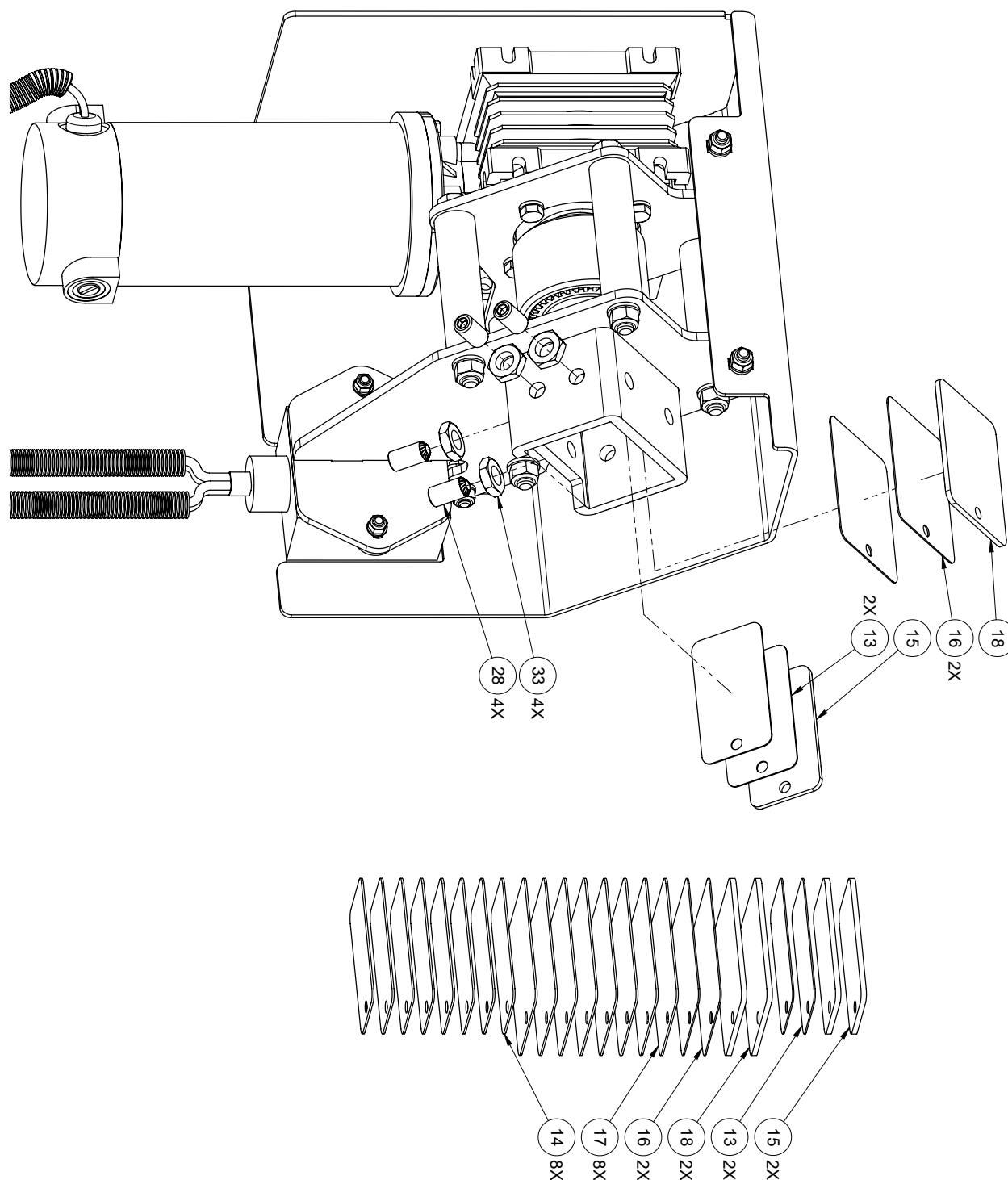
EXPLODED ASSEMBLY VIEWS CHASSIS



MOTOR/REDUCER & COUPLER



MOUNTING





PARTS LIST

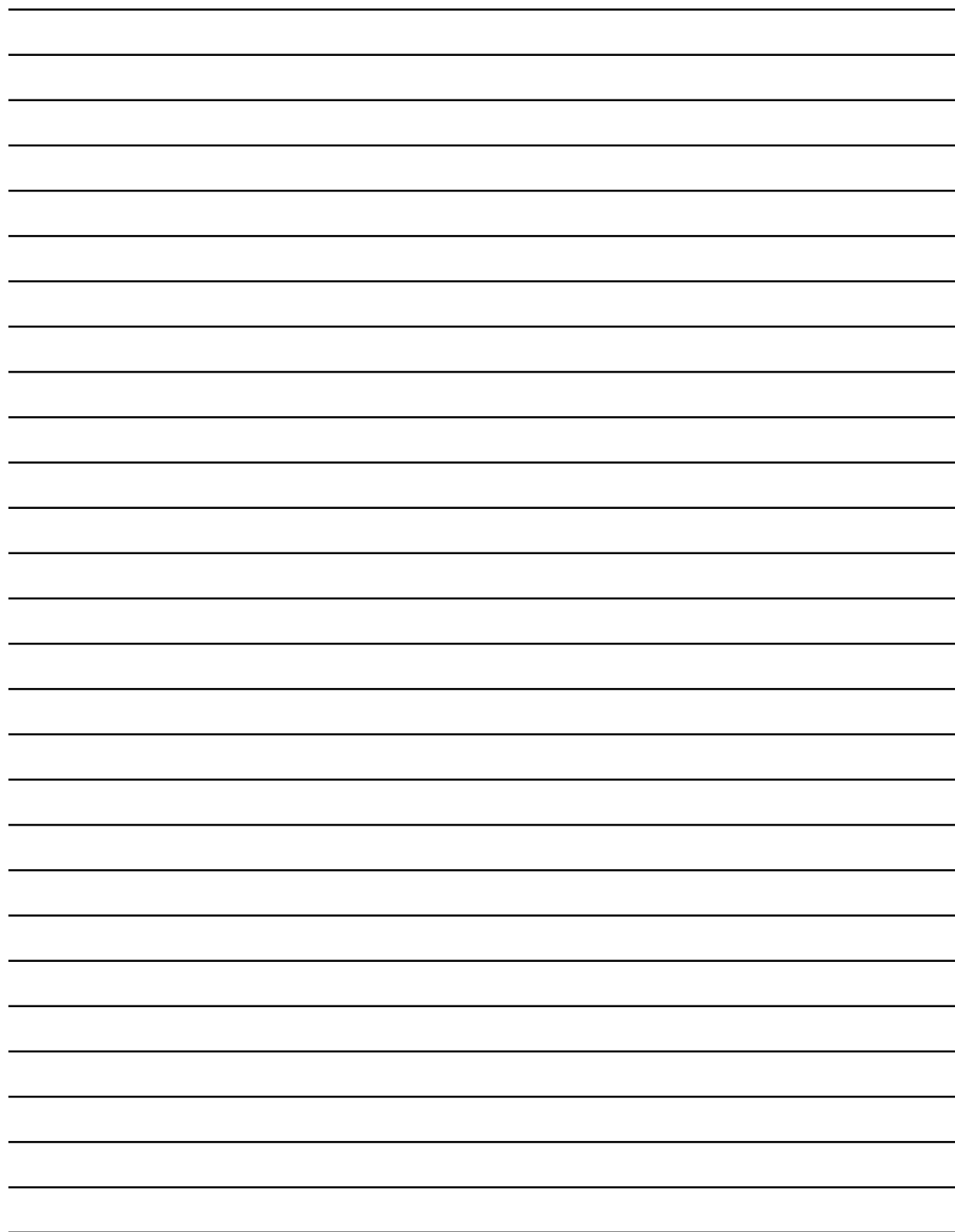
Item	Qty	Part No.	Description
1	1	0005456	POWER HEAD REDUCER MOUNTING PLATE
2	1	0005472	POWER HEAD LIFT MECHANISM MOUNT, HM130(MAX)
3	4	0004719	POWER HEAD MOUNT POST
4	1	0005453	POWER HEAD COVER, HM130(MAX)
5	1	0001572	FLEXIBLE SHAFT COUPLING SLEEVE, 65 mm OD
6	1	0004712	FLEXIBLE SHAFT COUPLING HUB, 12 mm SFT, PINNED
7	1	0004597	FLEXIBLE SHAFT COUPLING HUB, 18 mm SFT, KEYED
8	1	0004598	POWER HEAD SHAFT, 18 mm DIA, 127 mm LG
9	1	0006482	PARALLEL KEY, 6 X 6 mm, 12 mm LG
10	1	0004845	PARALLEL KEY, 6 X 6 mm, 32 mm LG
11	1	0004799	RETAINING RING, EXTERNAL, 18mm SHAFT (17 mm GROOVE)
12	1	0004777	SPRING PIN, SLOTTED, 5 mm DIA, 20 mm LG
13	4	0004627	SHIM, NARROW, 70 X 38.5 mm, 0.67 mm THK
14	8	0004635	SHIM, NARROW, 70 X 38.5 mm, 0.97 mm THK
15	3	0004626	SHIM, NARROW, 70 X 38.5 mm, 2.66 mm THK
16	4	0004629	SHIM, WIDE, 70 X 59 mm, 0.67 mm THK
17	8	0004634	SHIM, WIDE, 70 X 59 mm, 0.97 mm THK
18	3	0004628	SHIM, WIDE, 70 X 59 mm, 2.66 mm THK
19	1	0004697	WATERPROOF ROCKER SWITCH CABLE ASSEMBLY
20	1	0007025	LABEL, UP/DOWN, POWER HEAD
21	1	EM80ZYW13B	MOTOR/REDUCER, 12 V DC, 110 RPM, 10 N·m [3.28 lb·ft], 1:15 RATIO, 63B14 PAM FLANGE
22	2	HHB-MBA071FCJ	HEX HEAD BOLT, CLS 8.8, M5 X 0.8, 16 mm LG, FULL
23	4	HHB-MBE067FCJ	HEX HEAD BOLT, CLS 8.8, M6 X 1, 14 mm LG, FULL
24	1	HHB-MBE075FCJ	HEX HEAD BOLT, CLS 8.8, M6 X 1, 20 mm LG, FULL
25	4	HHB-MBJ155PCJ	HEX HEAD BOLT, CLS 8.8, M8 X 1.25, 100 mm LG, 22 mm LG THD
26	2	SNC-MBE071FCJ	CARRIAGE BOLT, SQ NECK, CLS 8.8, M6 X 1, 16 mm LG, FULL
27	2	KCS-MBE055TA	SET SCREW, KNURLED CUP POINT, SST, M6 X 1, 8 mm LG
28	4	KCS-MBM075TA	SET SCREW, KNURLED CUP POINT, SST, M10 X 1.5, 20 mm LG
29	4	FTW-MBA000AJ	FLAT WASHER, M5
30	8	FTW-MBE000AJ	FLAT WASHER, M6
31	8	FTW-MBJ000AJ	FLAT WASHER, M8
32	1	FDW-MBE065141RA	FENDER WASHER, M6, 18 mm OD, 1.7 mm THK, RUBBER
33	4	THN-MBMCC	HEX NUT, THIN, CLS 4, M10 X 1.5
34	2	HLN-MBACH	LOCK NUT, CLS 8, M5 X 0.8
35	3	HLN-MBECH	LOCK NUT, CLS 8, M6 X 1
36	4	HLN-MBJCH	LOCK NUT, CLS 8, M8 X 1.25



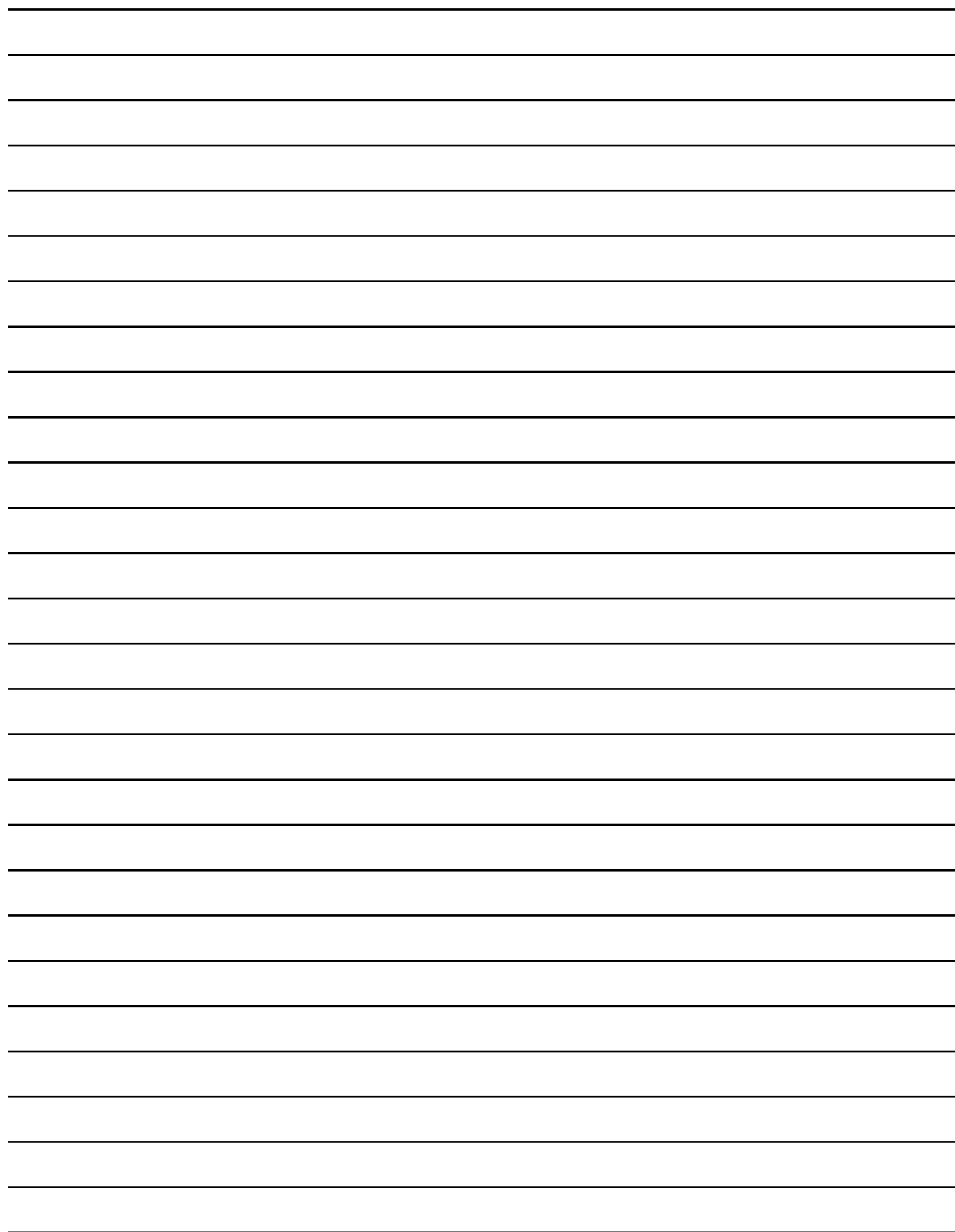
NOTES

Lined area for notes, consisting of multiple horizontal lines.

HM126, HM130, and HM130MAX™ Sawmills



HM126, HM130, and HM130MAX™ Sawmills



This page intentionally left blank.



DISCOVER THE WOODLAND™